



critical economics

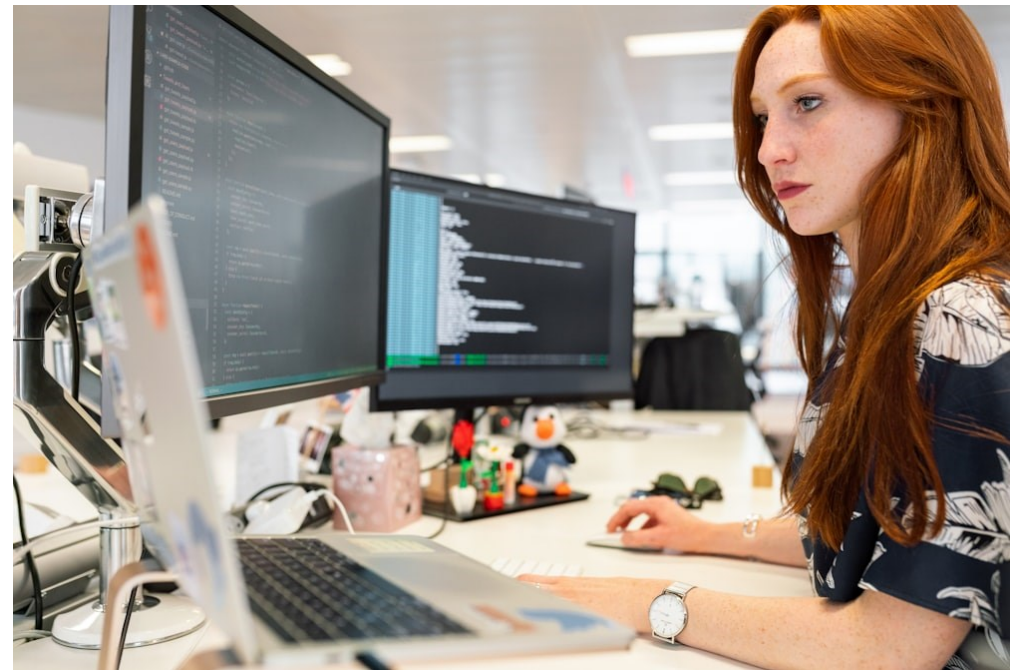
STATE OF THE ISLANDS

2024 AI Appraisal

impact & risk

CONTENTS

1. Summary	3	6. Conclusions	32
2. General AI Applications	5	Appendix 1	34
3. AI Impact on Islands	7	Appendix 2	36
3.1 Introduction	7	Review Series & Contact Details	37
3.2 Employment	9		
3.3 Public Sector & Government	11		
3.4 Environment	14		
3.5 Education & Skills	16		
3.6 Legal Sector Support	18		
3.7 Telecommunications	19		
3.8 Energy Generation & Supply	20		
3.9 Healthcare	23		
3.10 Tourism & Retail Sectors	25		
3.11 Financial Services	28		
3.12 Agriculture and Fishing	30		



REVIEW SERIES

Four comprehensive Reviews over a twelve months' rolling cycle are being generated for clients covering:

- The extent to which latest global, regional and other trends is having implications on island communities,
- How islands are responding to these trends (economically, socially, and environmentally),
- The following key subject areas each of which will be the specific focus in one of the four quarterly Reviews over the twelve months' rolling cycle (commencing June 2024):
 - Health & Social Care Challenges (June)
 - Population, Employment & Skills (September)
 - Economic & Fiscal Trends (December)
 - Environment (Incl. Climate Change) & Energy (Mar)

The first Review being released later this month (June) will be concentrating on island health and social care challenges. These issues are presenting island administrations with some immense resource problems particularly in relation to the provision of on-island facilities and funding shortfalls.

To find out more about our Review Series, or to understand about the island-specific research work we can provide, please get in touch with Chris Brock at: chris@criticaleconomics.com



Located in Guernsey, we have extensive knowledge of and practical experience in how islands operate globally. There are of course a wide range of island economic and social models adopted and it is essential that data and information are benchmarked accurately. Details of all our services can be found at: www.criticaleconomics.com

CRITICAL ECONOMICS LIMITED
Digital Greenhouse
2 Market Street
Guernsey GY1 1HB

Guernsey Registered Company 69251

critical
economics